



www.foresighttruss.com



FORESIGHT
TECHNOLOGY

AD: A Block, No.8, Lichi Garden 2nd Rd,
Luwu Villige, Changping Town, Dongguan China 523567
MOB: 0086-13544030301
TEL: 0086-769-82698594
www.foresighttruss.com

V1.0

■ About us

● Introduction

Since 2009-Foresight has been on the leading edge of manufacturing technologies and continues to be one of the key designers and manufacturers of numerous and unique live event/live sporting event products worldwide. Our specialties include; custom design-builds, aluminum truss, aluminum barricade, aluminum stages and the ever increasingly popular Ninja Warrior set configurations. Safety, quality and the acute attention to details makeup our companies' core set of values, beliefs and standards. With safety, the client and the end use always at the forefront of everything that we do-our result is delivering the highest quality and safest product line available in the market today to our numerous clients around the globe.

● Quality Assurance - Every Step of the Way

What sets Foresight apart from our competitors? It is our never ending-100% commitment to quality assurance for each and every project we embark upon with you. Whether you are renting, purchasing or creating a custom design for your live event needs-Foresight has you covered with our Quality Assurance Pledge to you as our client. Our stringent manufacturing methods and processes coupled with our detailed and internal quality control practices-assure quality, safety and reliability with every item we produce for you.

Concept and Design

Every great product starts with a well-planned design. At Foresight, we deploy a full top to bottom design-build process to bring your custom vision to life. We will work directly with you every step of the way from concept through design through final manufacturing. Foresight hosts a full time and seasoned design staff that is standing by to provide you with clear and concise renderings of your custom products. Once you are satisfied with this design and prior to beginning manufacturing-we then employ a 3rd party German design firm to complete final certifications on all design-build renderings.

● Materials

Quality Assurance can only start with quality products. In this regard, Foresight only sources the highest quality stock and materials from vendors who are in possession of EU compliant certificates. Using the right stock and base materials for the job allows us to apply true craftsmanship and attention to details to our strictly managed manufacturing processes.

● Manufacturing

At Foresight, our manufacturing standards are at the leading edge of modern standards and methods. Our company is proud to have passed the ISO 9001 International Quality System Certification. We are also proud to be in compliance with the manufacturing standards as set forth by EU EN1090. Furthermore, we are very pleased to be certified with the EN1090-1 /-3 certification as issued by TUV NORD which is the "Gold Standard" for aluminum truss manufactures worldwide. To further ensure the utmost and highest quality for our customers, all of our on-staff welders go through a rigorous and detailed in house training program and then must test and become certified with the "AWS" American Welding Society-Professional Certifications.

● Customer Service

Your complete and total satisfaction is our priority. Our team of industry professionals are standing by to assist you through all the processes involved in designing, purchasing, renting and the manufacturing of all of our live event product lines. We invite you to take the time to discuss your industry needs with one of our staff. Our quoting process is streamlined and efficient and we can usually provide you a verified quote within 1-2 days.

● Global Distribution

Foresight currently has strategic distribution points set throughout the globe to make the rental and purchasing of our products both economical and easy no matter where you may be. Our global partners are well versed in our products and processes and are available to assist you every step of the way.

● North American Distribution-Strategic Partnerships

Foresight currently has strategic partners and distribution facilities located in the USA standing by to help you with your ordering and logistical needs. These established, US based companies are located in Miami, Omaha, Los Angeles and San Francisco.

● European Union-Strategic Partnerships

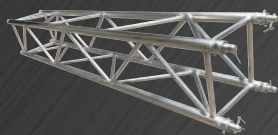
Foresight also currently has strategic partners and distribution facilities located in England, Germany and Sweden standing by to help you with your ordering and logistical needs.

● Australasia-Strategic Partnerships

Foresight also currently has strategic partners and distribution facilities located in Australia and New Zealand standing by to help you with your ordering and logistical needs.



Truss 桁架



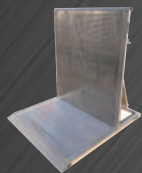
FS14	P7	FS52	P44
FS24	P10	FS54	P48
FS34	P14	FS7652	P52
FS34P	P16	FS102	P54
FS34H	P18	FB300A/B	P58/P60
FS34X	P24	FB305A/B	P64/P66
FS44/44P	P30/P32	TOWER SYSTEM	P70
FS44C	P34	FSUT (U TROM)	P80
FS45	P40	FSPR(PRE-RIG)	P84

Stage 舞台



Table Stage (四脚舞台)	P88	Eeay Stage (拉网舞台)	P98
M Stage (M 舞台)	P90		
Layer Stage (雷亚舞台)	P94		
Assembly Stage (拼装舞台)	P96		

Barricade 防暴栏



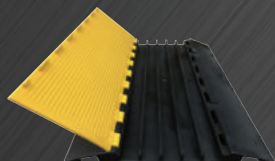
Straight Barrier (防暴栏直展)	P100	Cable Cross Gate (防暴栏过线门)	P104
Cable Cross Barrier (过线防暴栏)	P101	Barrier Trolley (防暴栏推车)	P105
Barrier Gate (防暴栏门)	P102		
Barrier Corner (防暴栏转角)	P103		

Ninja 忍者



Ninja Obstacles (忍者障碍物)	P110
-------------------------	------

Cable Crossover 线槽



2 Ch Cable Protector (二线槽)	P130
2 Ch Cable Protector (三线槽)	P130
3 Ch Cable Protector (四线槽)	P130
4 Ch Cable Protector (五线槽)	P130

Accessoriess 配件



Clamps (灯勾)	P131
Rigging Accessoriess (索具)	P137
Electric Accessoriess (电动配件)	P137

F80



Foldable kick scooter

N.W.:4.5kg

For ages 8 - Adult

Max load:100kg

TPR grips

Handle bar:AL6061-T6,Width:420mm,foldable

One bolt AL6061-T6 clamp

Headset:1 1/8" semi-internal headset

Fork:SPHC-PO steel,no suspension

Deck:AL6061-T6

Width:112mm,Length:560mm

Foot Area Length:340mm

Wheel:large 200mm,PP+PU with ABEC-9 bearings

Brake:pressure casting material:ADC10#

Front mudguard:pp3015

F75



Foldable kick scooter

N.W.:4.5kg

Loaded weight:100kg

grip:TPR

handlebar:AL6061-T6,420mm,foldable

Clamp:CNC AL6061-T6,2 bolts

Headset:1-1/8 semi-internal headset

Fork:steel

Deck:AL6061-T6,Width:112mm,Length:560mm

Foot Area Length:340mm

Wheel:175mm,PP+PU with ABEC-9 bearings

Brake:steel

Front mudguard:ABS

F50



Foldable kick scooter

N.W.:3.4kg

Max load:100kg

TPR grips

Handle bar:AL6061-T6,Width:330mm,foldable

1 bolts AL6061-T6 clamp

Headset:1 1/8" semi-internal headset

Fork:SPHC-PO steel,no suspension

Deck:AL6061-T6,Width:112mm,Length:500mm

Foot Area Length:320mm

Wheel:120.5mm,PP+PU with ABEC-9 bearings

Brake:steel

F50-1



Folding scooter

N.W.:3.5kg

Max load:100kg

Height: 62-75CM

TPR grips

Handle bar:Steel+AL,Width:330mm,foldable

1 bolts AL6061-T6 clamp

Fork:SPHC-PO steel,no suspension

Deck:AL6061-T6,Width:112mm

Foot Area Length:320mm

Wheel:120.5mm,PP+PU with ABEC-9 bearings

Brake:steel

Color:Black/Red/blue/white

Packing size: 640*115*275mm

E80S



Folding Escoter

NW:11.1kg

Gw:13.35kg

Loaded Weight:100kg

Max speed : 24km/h

Battery:36V,5AH chinese battery

motor: 36V,300W

control: PAS (power assist system)

charge time:3-4hours

Packing size:935*205*470mm

Mileage:10-20km

Grip:TPR rubber

Handlebar:AL6061-T6,width:520mm,folding

Head tube:AL6061-T6 CNC Machined,

Clamp:CNC AL6061-T6,two-bolt

Headset:1 1/8 semi-internal headset

Fork:steel suspension fork

Deck:AL6061-T6,140mm

Wheel:8 inch,PP+PU

Brake:Mechanical +E-BS

GX03



E-scooter

Age for: Above 14 years old

Max loading : 120kg

Motor: 36v 450w

Max speed: 15MPH(24KM/h)

Controller: 36v Limited 18A

Battery: 36v 13ah LG Battery

Charger: Input: 100v-240v, Out put: 42v, 2ah on table

Charging time: 8h

Distance: 35-40km

starting mode: push+Throttle

Main material: AL6061

Brake: Front Hand Brake + Rear foot brake, Electric brake + drum brake

Display: turn on/off, battery capacity, overspeed warning

Light: Front + Rear light, + Reflective Stripe

Width of Deck: 195mm

Wheel: 9.5 inch non-pneumatic solid wheel

Dimension: Unfold side: 1226x 500x 1108mm

Fold size: 1130mm*245mm*628mm

N.W: 20.6KG

G.W: 25KG

Package size: 1185mm*300mm*660mm



遠見

WWW.FORESIGHTTRUSS.COM

DESIGN • WELD EXPERT