



FORESIGHT
TECHNOLOGY

WELDING EXPERT, EN 1090 CERTIFICATED

CONTENTS

- Sphere Tent
- Curved Tent
- Double Decker tent
- Large Tent
- Customized Tent



Sphere Tent



1.Materials :

- Frame: Hot-dip Q235 steel profile.
- Membrane: Double PVC coated polyester, 850g/sqm, blackout, water-proof, UV resistant, fire retardant.

2.Feature:

- Allowed temperature condition: -30 degrees Celsius~+70 degree Celsius;
- Wind load: max. 100km/h (can be reinforced);
- Snow load: 75kg/sqm (snow can't stay if use big degree roof design);

3.Application:

- For wedding, event, party, festival, racing, sports, exhibition, trade show, warehouse, cathedral, outdoor activity, etc.

Specification

Diameter	Height	Diameter of Tube	Area of tarpaulin	Volume of space
3m	2.3m	21mm	23m ²	12.7m ³
6m	3.52m	21mm	69m ²	70m ³
8m	4m	26mm	106m ²	134m ³
12m	6m	33mm	235m ²	452m ³
15m	6.72m	33mm	329m ²	746m ³
20m	10m	38mm	640m ²	2090m ³
25m	12.5m	48mm	1000m ²	4090m ³
30m	13m	48mm	1260m ²	5744m ³
35m	14m	48mm	1605m ²	8170m ³
40m	16.5m	51mm	2142m ²	12720m ³
45m	18m	48mm	2642m ²	17367m ³
50m	20m	48mm	3258m ²	23823m ³
55m	22m	38mm	3940m ²	31710m ³
60m	25m	51mm	4836m ²	43524m ³



Curved Tent



1.Materials :

- Frame: Reinforced aluminium alloy 6061/T6 extruded profile, surface anodized finish;
- Roof cover: Double PVC coated polyester, 850g/sqm, blackout, water-proof, UV resistant, fire retardant;
- Sidewall: Double PVC coated polyester, 650g/sqm, translucent, water-proof, UV resistant, fire retardant.

2.Feature:

- Allowed temperature condition: -30 degrees Celsius~+70 degree Celsius;
- Wind load: max. 100km/h (can be reinforced);
- Snow load: 75kg/sqm (snow can't stay if use big degree roof design);

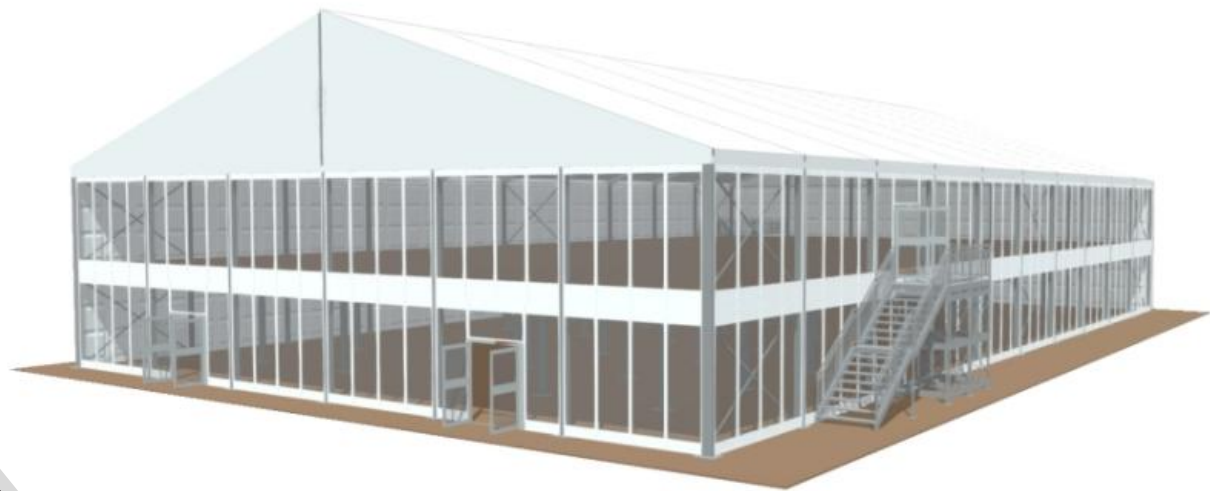
3.Application:

- For wedding, event, party, festival, racing, sports, exhibition, trade show, warehouse, cathedral, outdoor activity, etc.

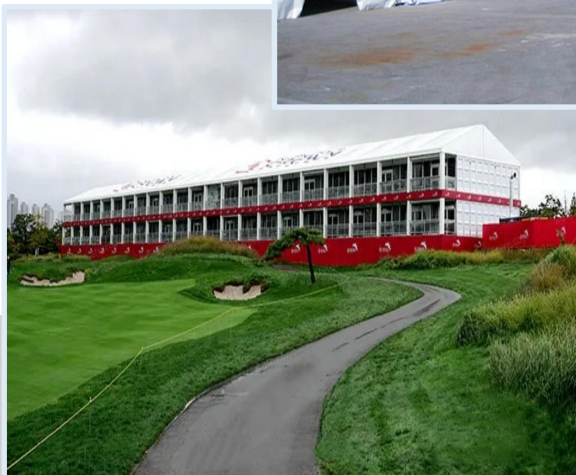


Specification

Span Width	Eave Height	Ridge Height	Bay Distance
10m	4m	7.16m	5m
12m	4m	7.4m	5m
15m	4m	8.75m	5m
18m	4m	9.15m	5m
20m	4m	9.42m	5m
25m	4m	11.72	5m
30m	4m	13.2m	5m
40m	4m	15.4m	5m
50m	4m	16m	5m
60m	4m	17m	5m



Double Decker Tent



1.Materials :

- Frame: Reinforced aluminium alloy 6061/T6 extruded profile, surface anodized finish;
- Roof cover: Double PVC coated polyester, 850g/sqm, blackout, water-proof, UV resistant, fire retardant;
- Sidewall: Double PVC coated polyester, 650g/sqm, translucent, water-proof, UV resistant, fire retardant.

2.Feature:

- Allowed temperature condition: -30 degrees Celsius~+70 degree Celsius;
- Wind load: max. 100km/h (can be reinforced);
- Snow load: 75kg/sqm (snow can't stay if use big degree roof design);

3.Application:

- For wedding, event, party, festival, racing, sports, exhibition, tradeshow, warehouse, cathedring, outdoor activity, and tent hire business, event design business, etc.

Specification

Span Width	Eave Height	Ridge Height	Bay Distance	Main Profile
10m	6.75m	8.50m	5m	300x120x5mm(4-channel)
15m	6.75m	9.34m	5m	300x120x5mm(4-channel)
20m	6.75m	10.17m	5m	300x120x5mm(4-channel)
25m	6.75m	11m	5m	300x120x5mm(4-channel)
30m	6.75m	11.75m	5m	300x120x5mm(4-channel)
40m	6.75m	13.5m	5m	300x120x5mm(4-channel)



Large Tent



We can offer you the tent as big as 60m span width. The bay distance is 5m, and there is no limits for the length. The big tent is the most widely used tent series for events, weddings, parties, restaurants, commercial, warehouse for permanent usage, exhibitions. Glass walls, glass doors, ABS walls, sandwich walls, air conditioners, flooring, lighting are available.

Specification

Span Width	Eave Height	Ridge Height	Bay Distance	Main Profile
10m	3.88m	5.53m	5m	204x102x4mm(4-channel)
12m	3.88m	5.83m	5m	204x102x4mm(4-channel)
15m	3.88m	6.3m	5m	204x102x4mm(4-channel)
16m	4m	6.5m	5m	204x102x4mm(4-channel)
18m	3.88m	6.9m	5m	204x102x4mm(4-channel)
20m	3.88m	7.1m	5m	204x102x4mm(4-channel)
21m	3.88m	7.25m	5m	204x102x4mm(4-channel)
25m	3.88m	7.88m	5m	204x102x4mm(4-channel)
30m	4m	8.9m	5m	300x120x5mm(4-channel)
40m	5m	11.5m	5m	400x120x6/7mm(4-channel)
50m	5m	13m	5m	400x120x6/7mm(4-channel)
55m	5m	14m	5m	400x120x6/7mm(4-channel)
60m	5m	14.6m	5m	400x120x6/7mm(4-channel)

Customized tent service can fully realize the personalized needs of customers, including the style and material of the tent can be changed according to customer needs. Improvement and innovation are always our eternal pursuit. Customized tent and design can meet the special requirements of customers.



**Customized
Tent**



1.Materials :

- Frame: Reinforced aluminium alloy 6061/T6 extruded profile, surface anodized finish;
- Roof cover: Double PVC coated polyester, 850g/sqm, blackout, water-proof, UV resistant, fire retardant;
- Sidewall: Double PVC coated polyester, 650g/sqm, translucent, water-proof, UV resistant, fire retardant.

2.Feature:

- Allowed temperature condition: -30 degrees Celsius~+70 degree Celsius;
- Wind load: max. 100km/h (can be reinforced);
- Snow load: 75kg/sqm (snow can't stay if use big degree roof design);

3.Application:

- For wedding, event, party, festival, racing, sports, exhibition, trade show, warehouse, cathedral, outdoor activity, etc.